

SIEMENS

Siemens recommends  
Ariel for perfect cleaning  
in 1 wash even on the  
toughest stains



## #1 Most Recommended Brand by Leading Machinery Manufacturers in Türkiye

To make your clothes like the first day, you should choose your detergent according to the stain and fabric type.

This information will help you choose the right detergent for your fabrics.

TEXTILE PRODUCTS	DETERGENT	WASH CYCLE	TEMPERATURE
Cotton or linen, white textile products suitable for boiling	Suitable washing detergent containing optical whitener	Cottons	Cold to 90°C
Linen or cotton, color laundry	Color laundry detergent without bleach and optical brightener	Cottons	Cold to 60°C
Synthetic fiber or synthetic, colored clothes	Optical brightener-free Color / delicate laundry detergent	Synthetics	Cold to 90°C
Silk or viscose, delicate garments	Delicate laundry detergent	Delicate / silk	Cold to 40°C
Woolens	Wool laundry detergent	Woolens	Cold to 40°C

## With the right cycle selection, your clothes are as good as the first day

Choosing the right cycle is as important as choosing the right detergent for your clothes to look like the first day and last longer. Siemens has something for every garment!



### COTTONS

Washing durable textiles made of cotton, linen or mixed fabrics. When activated, varioSpeed is also suitable as a shortened cycle for normally soiled laundry when activated.



### powerSpeed 59'

Washing cotton, linen, synthetic and mixed textured textiles. Suitable for lightly and normally soiled laundry. Optimum washing result in less than one hour



### OUTDOOR

Washing weatherproof and outdoor textile products consisting of membrane technology and water repellent textile products. Use a detergent suitable for outdoor textiles. Do not use fabric softener.



### SHIRT / BLOUSE

Washing shirts and blouses made of cotton, linen, synthetic or mixed textured fabric that do not need to be ironed, tip: To prevent wrinkles in the laundry, "anti-wrinkle" must be activated. The laundry is spun for a short time and can be removed when it is wet enough to drip water.



### SUPER QUICK 15'/30'

Washing cotton, synthetic and mixed textured textiles. Quick cycle for lightly soiled and small amounts of laundry. The duration is approximately 30 minutes. If you want to reduce the cycle duration to 15 minutes, varioSpeed must be enabled.

## Your laundry guide



1.

Check fabric labels and wash always your lights and darks separately to avoid color transfer.



2.

Do not overload. For best results, your laundry should have enough room to move freely in the drum. Make sure you have left a gap between your load and the top of the drum that is at least as big as your hand.



3.

Choose the Ariel that suits your clothes' needs and your preferences (powder, liquid, capsule). Add your detergent according to the correct detergent quantity guidance on the packaging. If your Siemens washing machine has the i-Dos feature, you don't have to worry about how much detergent to add! The i-Dos feature in Siemens Washing Machines with iSensoric smart sensor technology automatically determines the detergent your laundry needs.



4.

You can get the best results from your machine by performing a maintenance wash with Ariel Powder Detergent once a month. If your machine is featured with drum cleaning program, you can perform the maintenance wash with this program.

## How much detergent does your laundry need?

The i-Dos feature on Siemens Washing Machines with iSensoric smart sensor technology automatically determines the correct amount of detergent by analyzing the fabric type, load size and soiling level of the laundry. For washing machines without i-Dos feature, you can use the scaling below:

DRUM SIZE			
		50ml	150g
		90ml	225g
		130ml	300g

Always keep detergent away from children. For detailed information on the correct amount of detergent, see the information on your packaging or visit [ariel.com.tr](http://ariel.com.tr).

## Check the care labels!

Be sure to check the garment manufacturer's recommendations on the care labels.

A brief guide to the symbols on fabrics:

### WASHING



Suitable for high agitation wash/high-speed



Suitable for medium agitation wash/medium-speed



Suitable for low degree of agitation/drumming



Hand Wash

### DRYING



Tumble dry at normal heat



DO NOT tumble dry

### DRY CLEANING



The type of solvent suitable for use by the dry cleaner is indicated by letters.

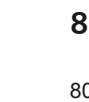
### IRONING



Iron Hot - max 200°C



Iron cool - max 110°C



Do Not Iron

8001200145

8001200145

8001200145 - 0008

SYMBOL	LAUNDRY PROCESS	RECOMMENDED CYCLE
	Normal Cycle	Cottons
	Delicates	Synthetics
	Very gentle	Delicate fabrics/silk for hand wash
	Hand wash	Woolens
	Not machine washable	-

# Measurement according to the needs of your laundry: i-Dos



i-Dos eliminates the frequently asked question "How much detergent does the laundry need?" when doing laundry.

The i-Dos feature in Siemens Washing Machines with iSensonic smart sensor technology automatically determines the right amount of detergent by analyzing the fabric type, load size and soiling level of the laundry. Once you fill it with detergent, it automatically adjusts the optimal amount for your laundry up to 20 times.

## EFFECTIVE EVEN ON 7-DAY DRIED STAINS

### THE BEST OF ARIEL



### ARIEL'S BEST LIQUID DETERGENT

Removes stains in the first wash.  
Restores the brightness of colors



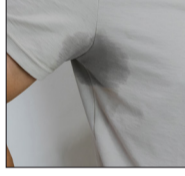
Say goodbye to tough stains  
with the stain removal

We sometimes have very hectic days. After such days, our clothes may be exposed to stubborn stains such as coffee, cosmetics, blood, oil, etc. Select the stain type from the display on the control panel of Siemens Washing Machines and your washing machine will automatically adjust the settings.

Cleaning difficult stains is now so easy with Siemens Washing Machines featuring iSensonic smart sensor technology!



Blood



Sweat



Tea



Coffee

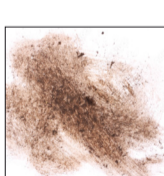


Wine



Sock grime

Say goodbye to tough stains  
with the stain removal



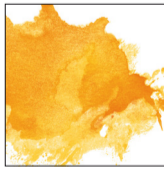
Mud



Oil



Strawberry



Orange



Grass



Tomato



Egg



Chocolate



Cosmetics

Try Ariel Oxi with 50% Refund  
Exclusive for Siemens Users!

**%50\***

**REFUND!**

**SIEMENS USERS  
ARE WINNERS!**

#### HOW DO I GET MY REFUND?



Buy any desired size of Ariel Oxi, the best of Ariel.



Generate QR Code.

Upload your receipt.



Fill in your information including Name-Surname, E-mail, IBAN. We will only use your information to process your refund.



Get your 50% refund in your account!

